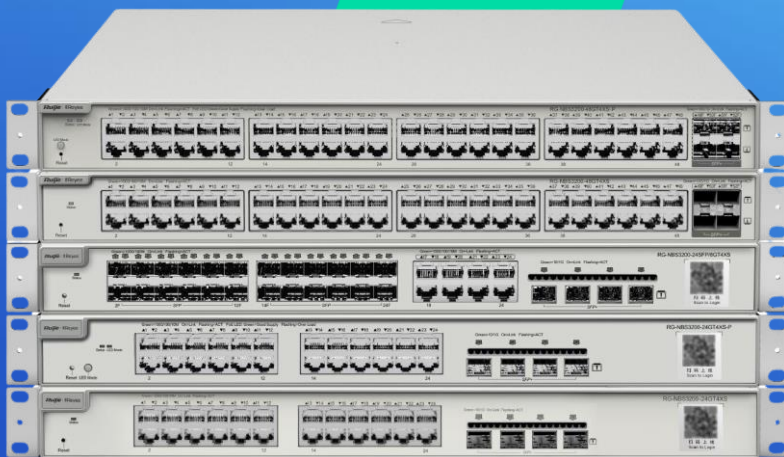


RG-NBS31/32 Series Layer 2 Cloud Managed Switches

DATASHEET

[Explore More](#)

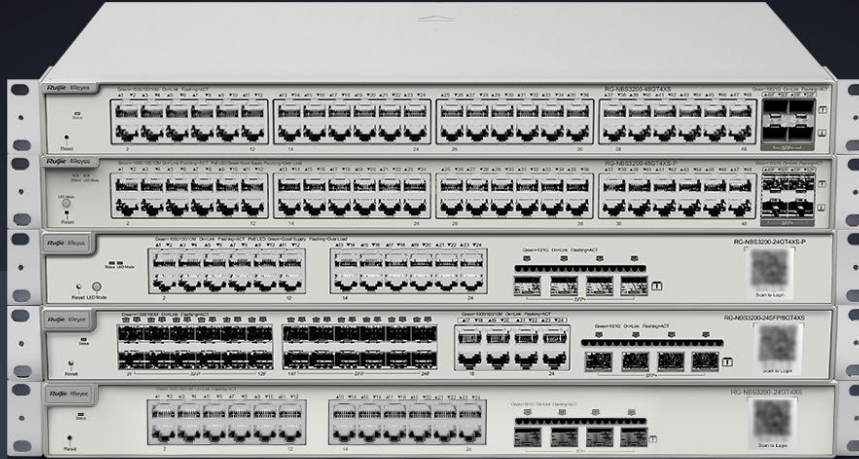


Highlights


- Enterprise-class Quality Ensures High Performance
- Multiple Security Policies Protect Your Network
- Lifetime management on Ruijie Cloud at anytime anywhere

Highlight Features

RG-NBS3000 Series Layer 2 Switch



 PoE Budget
370W

 Max. 30W
on Each Port

 Surge Protection
6KV

 5 Years
Warranty

Abundant PoE Application Scenarios



Highlight Features

Enterprise-class Quality Ensures High Performance

[Link Aggregation](#) [IGMP Snooping](#) [VLAN](#)



Enterprise-class Quality Ensures High Performance

[Link Aggregation](#) [IGMP Snooping](#) [VLAN](#)



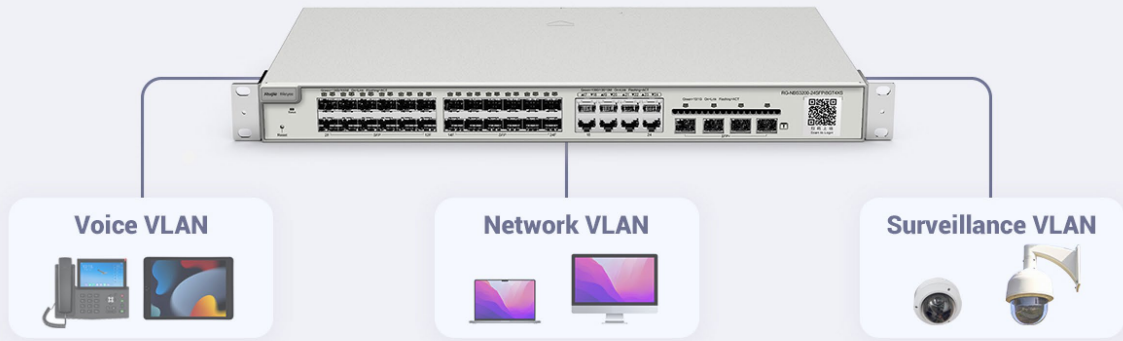
Highlight Features

Enterprise-class Quality Ensures High Performance

Link Aggregation

IGMP Snooping

VLAN



Multiple Security Policies Protect Your Network

Security

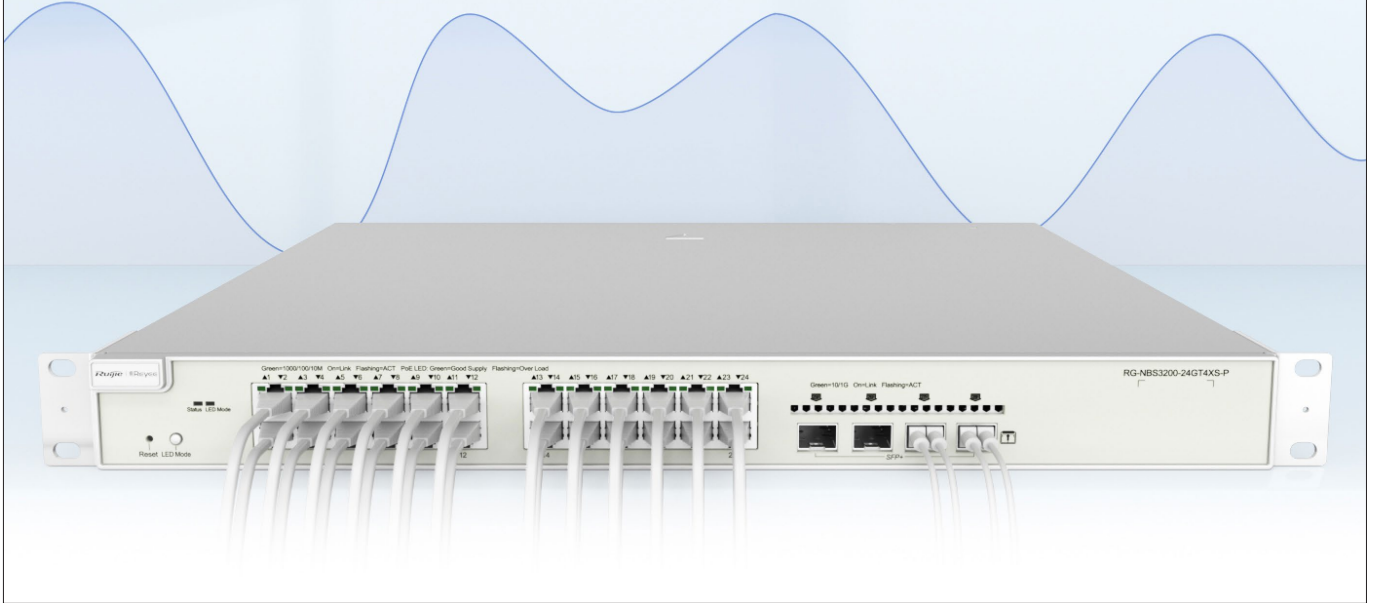
Stability



Highlight Features

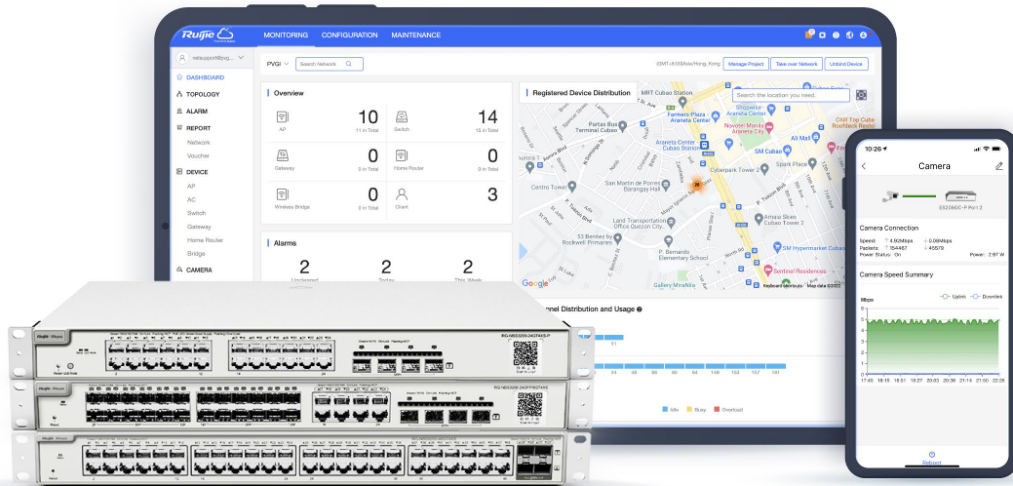
Multiple Security Policies Protect Your Network

Security **Stability**



Cloud, Make Your Business Easy

- SON, zero touch provisioning to Cloud
- Monitor switch statistics at anytime anywhere
- Configure VLANs on Ruijie Cloud APP
- Easy maintenance, save onsite time and cost



Specification	RG-NBS3100-8GT2SFP	RG-NBS3100-8GT2SFP-P	RG-NBS3100-24GT4SFP	RG-NBS3100-24GT4SFP-P	RG-NBS3100-48GT4SFP-P	RG-NBS3100-24GT4SFP-V2	RG-NBS3100-24GT4SFP-P-V2	RG-NBS3100-8GT2SFP-P-V2
RIPng(RIP Next Generation)	No	No	No	No	No	No	No	No
OSPFv2(Open Shortest Path First Version 2)	No	No	No	No	No	No	No	No
OSPFv3	No	No	No	No	No	No	No	No
Virtual Cluster Switching (VCS)	No	No	No	No	No	No	No	No
Hardware Specifications								
Reset Button	Yes	Yes	Yes	Yes	Yes	Yes	Yes	Yes
DIP Switch	N/A	LED MODE	N/A	LED MODE	LED MODE	N/A	LED MODE	LED MODE
Cable Hot-Swappable	Yes	Yes	Yes	Yes	Yes	Yes	Yes	Yes
Power Supply	Power adapter input: Rated voltage range: 100-240V~ Maximum voltage range: 90-264V~ Frequency: 50/60Hz Rated current: 1A Power adapter output: Rated voltage: 12V DC Rated current: 1A	Rated voltage range: 100-240V~ Maximum voltage range: 90-264V~ Frequency: 50/60Hz Rated current: 2A	Rated voltage range: 100-240VAC Maximum voltage range: 90-264VAC Frequency: 50/60Hz Rated current: 0.6A	Rated voltage range: 100-240VAC Maximum voltage range: 90-264VAC Frequency: 50/60Hz Rated current: 6A	Maximum voltage range: 90-264V~ Frequency: 50/60Hz Rated current: 7A	Rated voltage range: 100-240VAC Maximum voltage range: 90-264VAC Frequency: 50/60Hz Rated current: 0.6A	Rated voltage range: 100-240VAC Maximum voltage range: 90-264VAC Frequency: 50/60Hz Rated current: 6A	Rated voltage range: 100-240V~ Maximum voltage range: 90-264V~ Frequency: 50/60Hz Rated current: 2.5A

Specifications

Specifications	RG-NBS3200-24GT4XS	RG-NBS3200-48GT4XS	RG-NBS3200-24SFP/8GT4XS	RG-NBS3200-24GT4XS-P	RG-NBS3200-48GT4XS-P
Basic					
Total Number of RJ45 Ports	24	48	8	24	48
Total Number of Optical Ports	4	4	28	4	4
Number of Combo Ports	N/A	N/A	8	N/A	N/A
Number of 1 Gbps Optical Ports (SFP)	N/A	N/A	24	N/A	N/A
Number of 10 Gbps Optical Ports (SFP+)	4	4	4	4	4
Number of 10/100/1000BASE-T Ports	24	48	8	24	48
Number of PoE/PoE+ Ports	N/A	N/A	N/A	24	48
Max. PoE Power Budget	N/A	N/A	N/A	370W	370W
PoE Power Pins	N/A	N/A	N/A	1 2+ 3 6-	1 2+ 3 6-
Layer	L2	L2	L2	L2	L2
Switching Capacity	128Gbps	216Gbps	128Gbps	128Gbps	216Gbps
Forwarding Rate	96Mpps	132Mpps	96Mpps	96Mpps	132Mpps
Buffer Size	12 Mbits	16 Mbits	12 Mbits	12 Mbits	16 Mbits
ARP Table Size	1000	1000	1000	1000	1000
Flash Memory	256MB	256MB	256MB	256MB	256MB
SDRAM	512MB	1GB	512MB	512MB	512MB
MAC Address Table Size	16000	16000	16000	16000	16000
Max. Number of VLANs	4094	4094	4094	4094	4094
Dimensions (W x D x H)	440mm x 207.5mm x 43.6mm	440mm x 267.5mm x 43.6mm	440mm x 267.5mm x 43.6mm	440mm x 357.6mm x 43.6mm	440mm x 357.6mm x 43.6mm

Specifications	RG-NBS3200-24GT4XS	RG-NBS3200-48GT4XS	RG-NBS3200-24SFP/8GT4XS	RG-NBS3200-24GT4XS-P	RG-NBS3200-48GT4XS-P
Net Weight	2.9 kg	3.6 kg	3.35 kg	4.75 kg	5.4 kg
Mean Time Between Failure (MTBF)	400000H	400000H	400000H	400000H	400000H
Safety Compliance	IEC 62368-1	IEC 62368-1	IEC 62368-1	IEC 62368-1	IEC 62368-1
Warranty	5	5	5	5	5
Layer2 features					
Jumbo Frame Length (MTU)	9216 Bytes(Per-port MTU)	9216 Bytes(Per-port MTU)	9216 Bytes(Per-port MTU)	9216 Bytes(Per-port MTU)	9216 Bytes(Per-port MTU)
Flow Control	Yes	Yes	Yes	Yes	Yes
Port Isolation / Protected Port	Yes	Yes	Yes	Yes	Yes
STP (IEEE 802.1D)	Yes	Yes	Yes	Yes	Yes
RSTP (IEEE 802.1w)	Yes	Yes	Yes	Yes	Yes
MSTP (IEEE 802.1s)	No	No	No	No	No
PortFast	Yes	Yes	Yes	Yes	Yes
BPDU Guard	Yes	Yes	Yes	Yes	Yes
Auto Errdisable Recovery	Yes	Yes	Yes	Yes	Yes
Link Aggregation	Yes	Yes	Yes	Yes	Yes
Max. Number of LAGs	16	16	16	16	16
Max. Members per LAG	8	8	8	8	8
Unknown Unicast Storm Control	Yes	Yes	Yes	Yes	Yes
Broadcast Storm Control	Yes	Yes	Yes	Yes	Yes
Multicast Storm Control	Yes	Yes	Yes	Yes	Yes
SPAN	Yes	Yes	Yes	Yes	Yes
RSPAN	No	No	No	No	No
ERSPAN	No	No	No	No	No
VLAN Range	1-4094	1-4094	1-4094	1-4094	1-4094
Port-based VLAN	Yes	Yes	Yes	Yes	Yes
MAC-based VLAN	No	No	No	No	No

Specifications	RG-NBS3200-24GT4XS	RG-NBS3200-48GT4XS	RG-NBS3200-24SFP/8GT4XS	RG-NBS3200-24GT4XS-P	RG-NBS3200-48GT4XS-P
IP-based VLAN	No	No	No	No	No
Voice VLAN	Yes	Yes	Yes	Yes	Yes
RLDP	Yes	Yes	Yes	Yes	Yes
LLDP	Yes	Yes	Yes	Yes	Yes
LLDP-MED	Yes	Yes	Yes	Yes	Yes
LLDP-PoE	No	No	No	No	No
Cable Test	Yes	Yes	Yes	Yes	Yes
IGMP Snooping v1	Yes	Yes	Yes	Yes	Yes
IGMP Snooping v2	Yes	Yes	Yes	Yes	Yes
IGMP Snooping v3(Basic)	Yes	Yes	Yes	Yes	Yes
IPv4 Ping	Yes	Yes	Yes	Yes	Yes
IPv6 Ping	Yes	Yes	Yes	Yes	Yes
Traceroute	Yes	Yes	Yes	Yes	Yes
IP Standard ACL	Yes	Yes	Yes	Yes	Yes
MAC Extended ACL	Yes	Yes	Yes	Yes	Yes
IP Extended ACL	Yes	Yes	Yes	Yes	Yes
Port-Level Rate Limiting (Ingress/Egress)	Yes	Yes	Yes	Yes	Yes
DNS Client	Yes	Yes	Yes	Yes	Yes
SNMP v1	Yes	Yes	Yes	Yes	Yes
SNMP v2c	Yes	Yes	Yes	Yes	Yes
SNMP v3	Yes	Yes	Yes	Yes	Yes
Web Management	Yes	Yes	Yes	Yes	Yes
HTTP	Yes	Yes	Yes	Yes	Yes
HTTPS	Yes	Yes	Yes	Yes	Yes
Ruijie Cloud Management	Yes	Yes	Yes	Yes	Yes
Ruijie Reeye App Management	Yes	Yes	Yes	Yes	Yes

Specifications	RG-NBS3200-24GT4XS	RG-NBS3200-48GT4XS	RG-NBS3200-24SFP/8GT4XS	RG-NBS3200-24GT4XS-P	RG-NBS3200-48GT4XS-P
IP-based Self-Organizing Network (SON)	Yes	Yes	Yes	Yes	Yes
Camera Detection	Yes	Yes	Yes	Yes	Yes
Loop Prevention	Yes	Yes	Yes	Yes	Yes
Loop Notification	Yes	Yes	Yes	Yes	Yes
PoE Power Usage Alarm	No	No	No	Yes	Yes
IP Source Guard	Yes	Yes	Yes	Yes	Yes
Anti-ARP Spoofing	Yes	Yes	Yes	Yes	Yes
DHCP Snooping	Yes	Yes	Yes	Yes	Yes
DHCP Client	Yes	Yes	Yes	Yes	Yes
AAA(Authentication, Authorization, Accounting)	No	No	No	No	No
IEEE 802.1X Authentication	Yes	Yes	Yes	Yes	Yes
PoE Watchdog	No	No	No	Yes	Yes
Digital Diagnostic Monitoring (DDM)	Yes	Yes	Yes	Yes	Yes
Number of ACEs	In-1900 Out-0	In-1900 Out-0	In-1900 Out-0	In-1900 Out-0	In-1900 Out-0
G.8032 (ERPS)	Yes	Yes	Yes	Yes	Yes
RADIUS	Yes	Yes	Yes	Yes	Yes
TACACS+	No	No	No	No	No
CPU Protection Policy (CPP)	Yes	Yes	Yes	Yes	Yes
MQTT	Yes	Yes	Yes	Yes	Yes
QoS	Yes	Yes	Yes	Yes	Yes
SON Priority	2560	2560	2560	2560	2560
Web Authentication	Yes	Yes	Yes	Yes	Yes
Layer 3 features					
Static Routing	NO	No	No	No	No
DHCP Server	NO	No	No	No	No

Specifications	RG-NBS3200-24GT4XS	RG-NBS3200-48GT4XS	RG-NBS3200-24SFP/8GT4XS	RG-NBS3200-24GT4XS-P	RG-NBS3200-48GT4XS-P
RIP	NO	No	No	No	No
RIPng(RIP Next Generation)	NO	No	No	No	No
OSPFv2(Open Shortest Path First Version 2)	NO	No	No	No	No
OSPFv3	NO	No	No	No	No
Virtual Cluster Switching (VCS)	NO	No	No	No	No
Hardware Specifications					
Reset Button	Yes	Yes	Yes	Yes	Yes
DIP Switch	N/A	N/A	N/A	LED MODE	LED MODE
Cable Hot-Swappable	Supported by all ports	Yes	Yes	Yes	Yes
Power Supply	Rated voltage range: 100-240VAC Maximum voltage range: 90-264VAC Frequency: 50/60Hz Rated current: 1.5A	Rated voltage range: 100-240VAC Maximum voltage range: 90-264VAC Frequency: 50/60Hz Rated current: 2A	Rated voltage range: 100-240VAC Maximum voltage range: 90-264VAC Frequency: 50/60Hz Rated current: 2A	Rated voltage range: 100-240V~ Maximum voltage range: 90-264V~ Frequency: 50/60Hz Rated current: 6A	Maximum voltage range: 90-264V~ Frequency: 50/60Hz Rated current: 7A
Power Consumption	28.028W	46.4W	41.8W	No PoE load: 42.48W; Full PoE load: 431.86W	No PoE load: 61.57W; Full PoE load: 447.69W
EEE	Yes	Yes	Yes	Yes	Yes
Port Surge Protection	Common Mode 6KV	Common Mode 6KV	Common Mode 6KV	Common Mode 6KV	Common Mode 6KV
Power Supply Surge Protection	Common Mode 6KV Differential mode 6KV	Common Mode 6KV Differential mode 6KV	Common Mode 6KV Differential mode 6KV	Common Mode 6KV Differential mode 6KV	Common Mode 6KV Differential mode 6KV
Airflow	Left to back	Left to back &Right to back	Left to back	Left to right	Left to back &Right to back
Fan Speed Control	Hardware-based adjustment	Hardware-based adjustment	Hardware-based adjustment	Hardware-based adjustment	Hardware-based adjustment
Acoustic Noise Level	<45dB (when the device works normally)	<45dB (when the device works normally)	<45dB (when the device works normally)	<45dB (when the device works normally)	<45dB (when the device works normally)

Specifications	RG-NBS3200-24GT4XS	RG-NBS3200-48GT4XS	RG-NBS3200-24SFP/8GT4XS	RG-NBS3200-24GT4XS-P	RG-NBS3200-48GT4XS-P
Operating Temperature	0 to 50°C	0 to 50°C	0 to 50°C	0 to 50°C	0 to 50°C
Storage Temperature	-40 to 70°C	-40 to 70°C	-40 to 70°C	-40 to 70°C	-40 to 70°C
Operating Humidity	10% to 90% RH(non-condensing)	10% to 90% RH(non-condensing)	10% to 90% RH(non-condensing)	10% to 90% RH(non-condensing)	10% to 90% RH(non-condensing)
Storage Humidity	5% to 95% RH(non-condensing)	5% to 95% RH(non-condensing)	5% to 95% RH(non-condensing)	5% to 95% RH(non-condensing)	5% to 95% RH(non-condensing)
Electrostatic Discharge (ESD) Protection	Air Discharge: 8KV Contact Discharge: 6KV	Air Discharge: 8KV Contact Discharge: 6KV	Air Discharge: 8KV Contact Discharge: 6KV	Air Discharge: 8KV Contact Discharge: 6KV	Air Discharge: 8KV Contact Discharge: 6KV
Casing	Metal	Metal	Metal	Metal	Metal
Mounting	Rack installation	Rack installation	Rack installation	Rack installation	Rack installation
LEDs	System: SYS(Green) Per RJ45 Ports: LINK/ACT(Green) Per SFP Interface: LINK/ACT(Green)	System: SYS(Green) Per RJ45 Ports: LINK/ACT(Green) Per SFP Interface: LINK/ACT(Green)	System: SYS(Green) Per RJ45 Ports: LINK/ACT(Green) Per SFP Interface: LINK/ACT(Green)	System: SYS(Green) Per RJ45 PoE+ Ports: PoE-in-Use(Green) LINK/ACT(Green) Per SFP Interface: LINK/ACT(Green)	System: SYS(Green) Per RJ45 PoE+ Ports: PoE-in-Use(Green) LINK/ACT(Green) Per SFP Interface: LINK/ACT(Green)
Operating Altitude (m)	-500~5000M	-500~5000M	-500~5000M	-500~5000M	-500~5000M
Certification	CE;FCC	CE;FCC	CE;FCC	CE;FCC	CE;FCC
EMC	EN 55032:2015+AC:2016 EN 61000-3-2:2014 EN 61000-3-3:2013 EN 55035:2017 ETSI EN 300 386 V2.1.1 (2016-07)	EN 55032:2015+AC:2016 EN 61000-3-2:2014 EN 61000-3-3:2013 EN 55035:2017 ETSI EN 300 386 V2.1.1 (2016-07)	EN 55032:2015+AC:2016 EN 61000-3-2:2014 EN 61000-3-3:2013 EN 55035:2017 ETSI EN 300 386 V2.1.1 (2016-07)	EN 55032:2015+AC:2016 EN 61000-3-2:2014 EN 61000-3-3:2013 EN 55035:2017 ETSI EN 300 386 V2.1.1 (2016-07)	EN 55032:2015+AC:2016 EN 61000-3-2:2014 EN 61000-3-3:2013 EN 55035:2017 ETSI EN 300 386 V2.1.1 (2016-07)

Ruijie | RYCE

 **Redefine your easy network**

Copyright ©2000-2024 Ruijie Networks Co., Ltd. All rights reserved.

No part of this document may be reproduced or transmitted in any form or any means without prior written consent of Ruijie Networks Co., Ltd.

Notice

This content is applicable only to regions outside the China mainland. Ruijie Networks Co., Ltd. reserves the right to interpret this content.

The information contained herein is subject to change without notice. Nothing herein should be construed as constituting an additional warranty. Ruijie Networks Co., Ltd. shall not be liable for technical or editorial errors or omissions contained herein.



Ruijie Networks Co., Ltd.

Official Website: <https://www.ruijie.com>